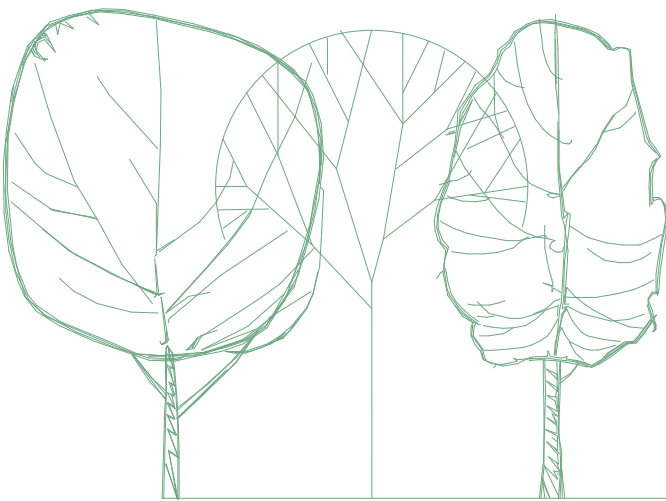


GARDEN COMPLEX





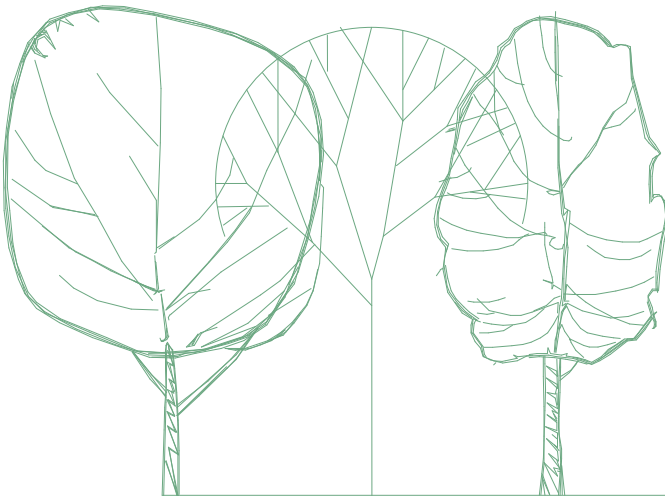
SADRŽAJ

05	O PROJEKTU
07	ŠIRA SITUACIJA
09	UŽA SITUACIJA
11	VIZUALIZACIJA EKSTERIJERA
25	TIPOLOGIJA STAMBENIH JEDINICA



O PROJEKTU

Graden Complex čine četiri stambene zgrade povezane u jednu cjelinu. Smješten je u prirodnom ambijentu, na veoma dobroj lokaciji koja ujedno pruža mir, udobnost i jednostavnost, ali vam ne uskraćuje prednosti urbanog življenja. Povezana sa glavnim saobraćajnicama, omogućava dostupnost i blizinu urbanim, poslovnim, obrazovnim, sportskim sadržajima... Unutrašnjost i postojeća zelena površina, zatravnjen prostor u krugu čitavog kompleksa oplemenjen je pažljivo biranim sadnicama, igraonicom za djecu i fontanama koje čine prostor veoma prijatnim.



ŠIRA SITUACIJA



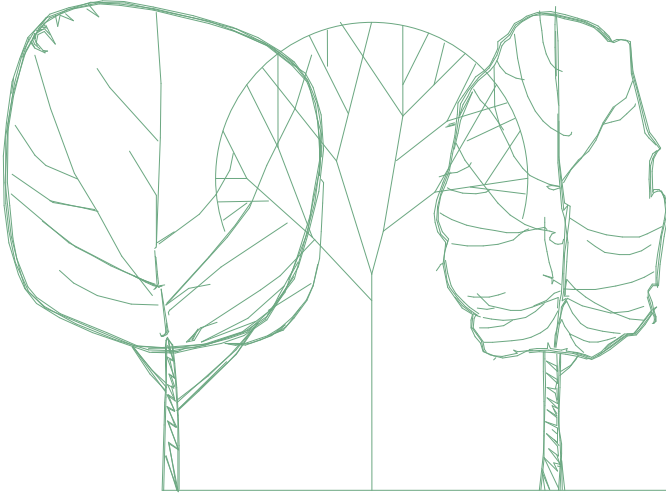
CITY KVART

DELTA CITY

PJEŠAČKI MOST

IITEX

LOKACIJA



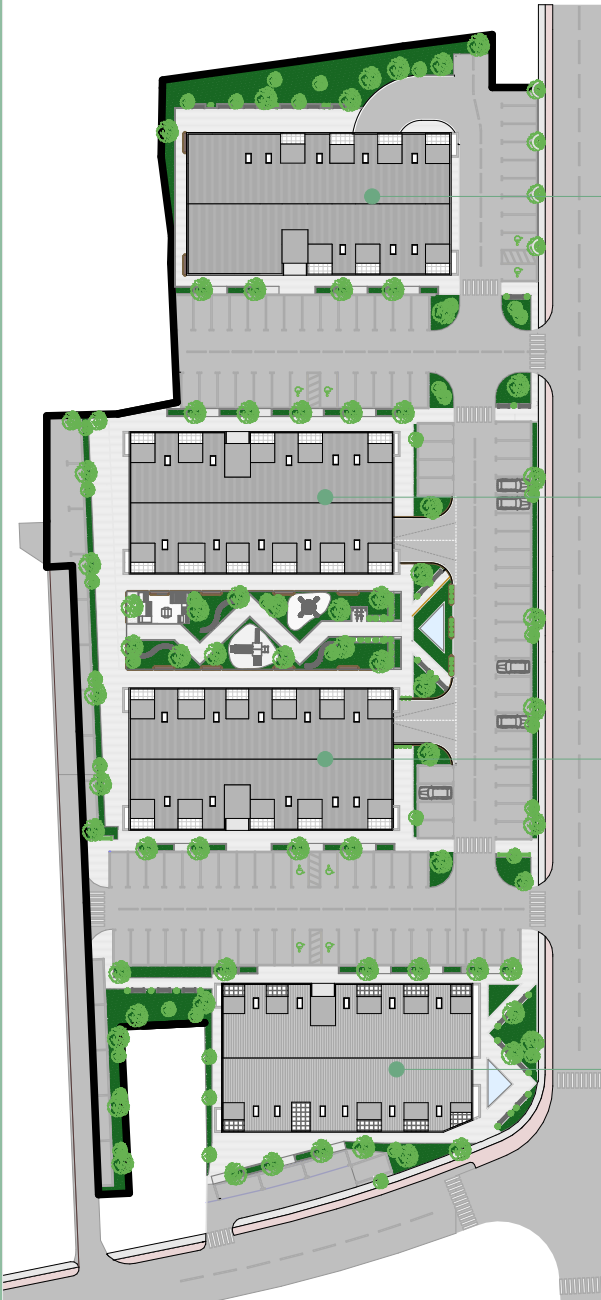
UŽA SITUACIJA

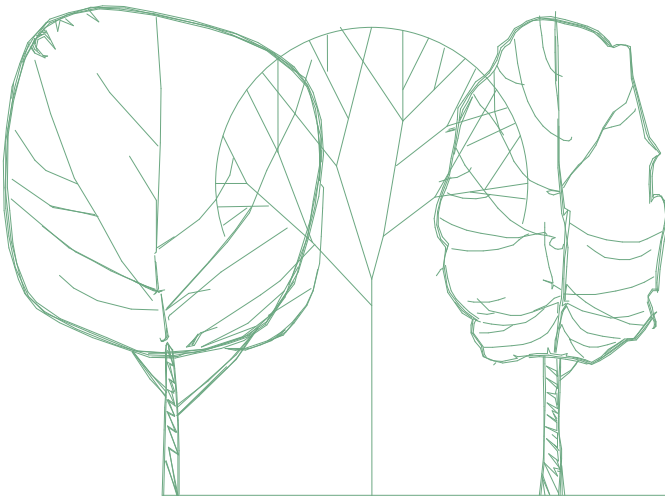
ZGRADA 4

ZGRADA 3

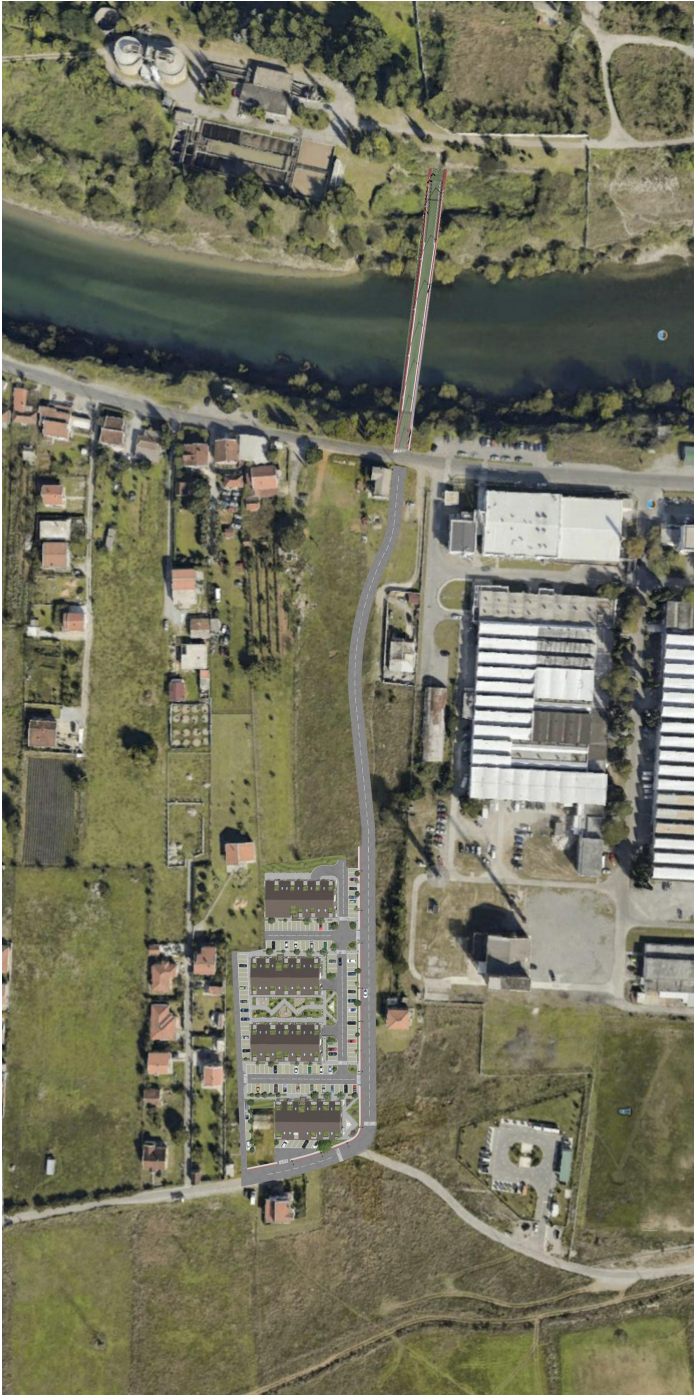
ZGRADA 2

ZGRADA 1





VIZUALIZACIJA EKSTERIJERA





GARDEN COMPLEX



GARDEN COMPLEX



GARDEN COMPLEX



GARDEN COMPLEX



GARDEN COMPLEX



GARDEN COMPLEX



GARDEN COMPLEX



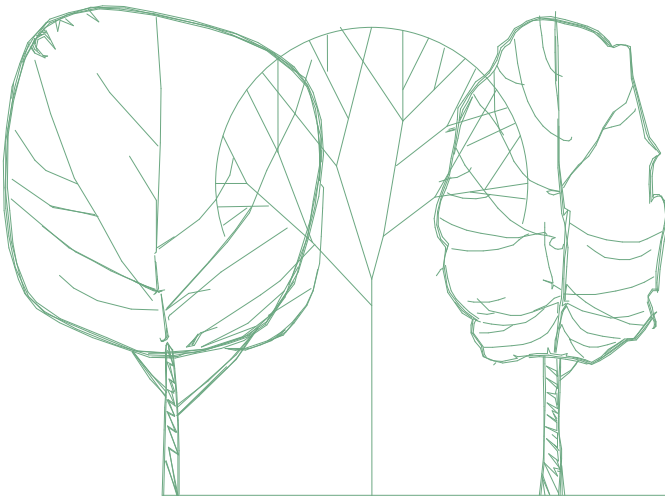
GARDEN COMPLEX



GARDEN COMPLEX



GARDEN COMPLEX



TIPOLOGIJA STAMBENIH JEDINICA

TIPSKJE JEDINICE

Stambene zgrade su podijeljene na 4 faze. Tipologija stanova nastala je u zavisnosti od kvadrature i pozicije u okviru sve četiri zgrade.

Razlikuju se više stambenih jedinica, i to:

- garsonjere
- jednosobni stanovi
- dvosobni stanovi

U sklopu Zgrade 1 (na prizemlju) nalazi se poslovni prostor.

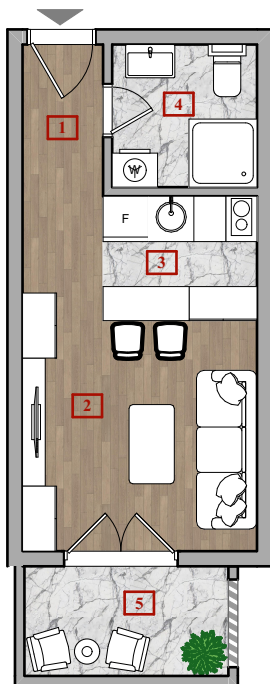
U cijelom kompleksu postoji 167 parking mjesta, od kojih su 125 nadzemnih i 42 garažnih mjesta.

ZGRADA 2



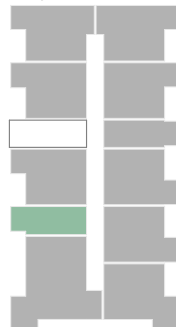
Stambena jedinica (Pr.G2, 1.G4, 2.G4)

Garsonjera _____ 24.3 m²

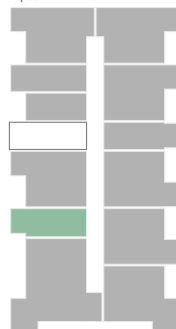


01.HODNIK	2.1 m ²
02.DNEVNI BORAVAK I TRPEZARIJA	12.7 m ²
03.KUHINJA	2.0 m ²
04.KUPATILO	3.6 m ²
05.TERASA	3.9 m ²

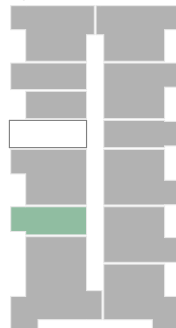
Prizemlje



I sprat



II sprat

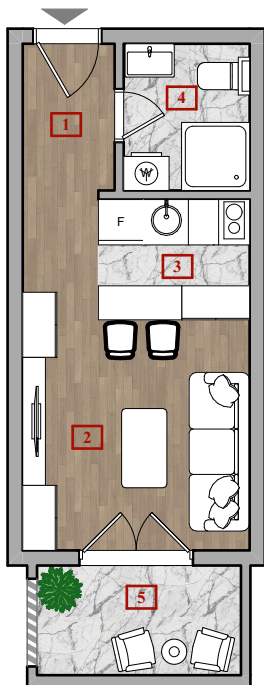


Tavan



Stambena jedinica (PR.G1, 1.G3, 2.G3)

Garsonjera _____ 23.5 m²

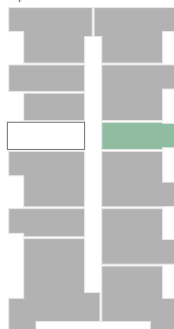


01.HODNIK	2.5 m ²
02.DNEVNI BORAVAK I TRPEZARIJA	11.5 m ²
03.KUHINJA	2.4 m ²
04.KUPATILO	3.2 m ²
05.TERASA	3.9 m ²

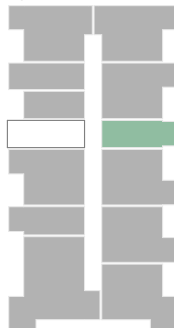
Prizemlje



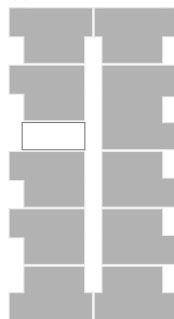
I sprat



II sprat

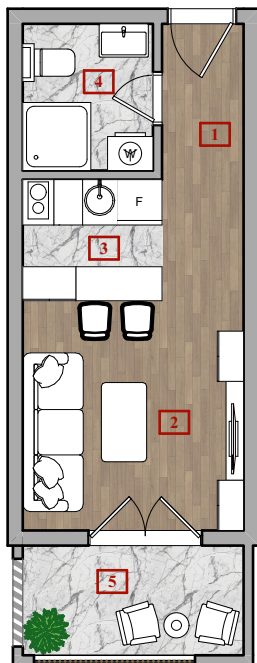


Tavan



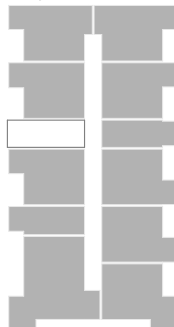
Stambena jedinica (1.G1, 2.G1)

Garsonjera _____ 23.3 m²



01.HODNIK	2.2 m ²
02.DNEVNI BORAVAK I TRPEZARIJA	11.5 m ²
03.KUHINJA	2.1 m ²
04.KUPATILO	3.3 m ²
05.TERASA	4.2 m ²

Prizemlje



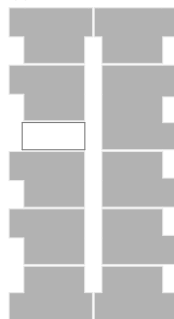
I sprat



II sprat

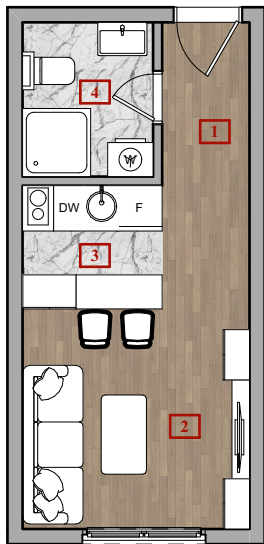


Tavan



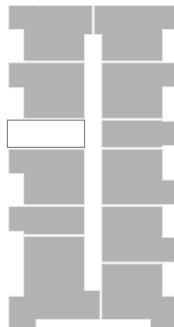
Stambena jedinica (1.G2, 2.G2)

Garsonjera _____ 19.6 m²

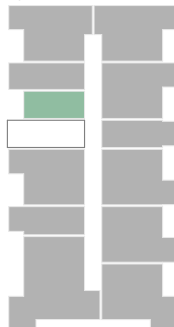


01.HODNIK	2.5 m ²
02.DNEVNI BORAVAK I TRPEZARIJA	11.9 m ²
03.KUHINJA	1.7 m ²
04.KUPATILO	3.5 m ²

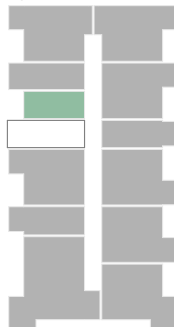
Prizemlje



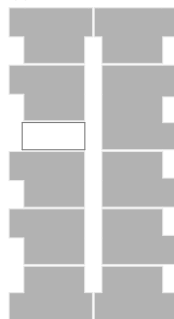
I sprat



II sprat

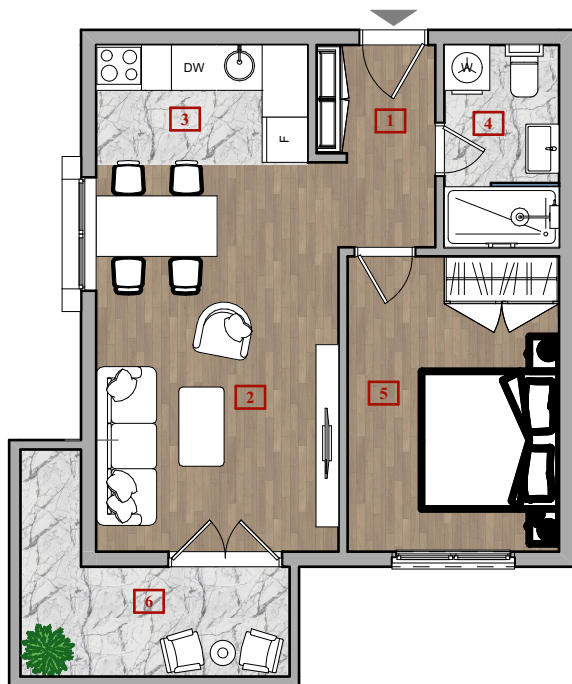


Tavan



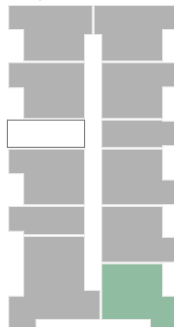
Stambena jedinica (PR. J8, 1.J7, 2.J7)

Jednosoban stan _____ 46.0 m²

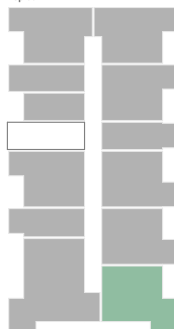


01.HODNIK	3.8 m ²
02.DNEVNI BORAVAK I TRPEZARIJA	16.5 m ²
03.KUHINJA	4.3 m ²
04.KUPATILO	4.1 m ²
05.SPAVAĆA SOBA	10.9 m ²
06.TERASA	6.4 m ²

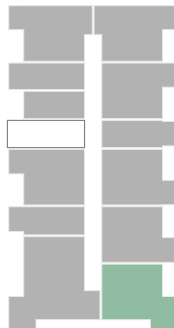
Prizemlje



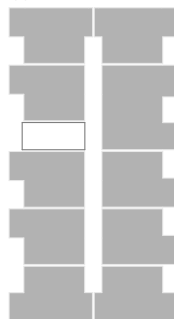
I sprat



II sprat

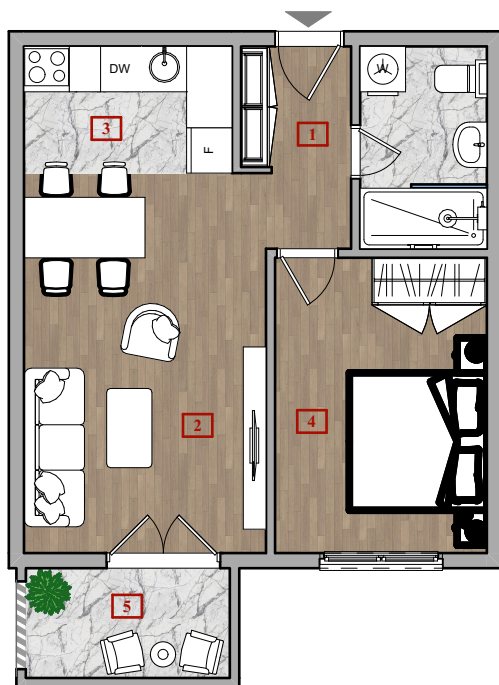


Tavan



Stambena jedinica (PR.J3, PR.J4, PR.J5, PR.J6, PR.J7, 1.J3, 1.J4, 1.J5, 1.J6, 2.J3, 2.J4, 2.J5, 2.J6)

Jednosoban stan _____ 43.5 m²



01.HODNIK	3.5 m ²
02.DNEVNI BORAVAK I TRPEZARIJA	16.1 m ²
03.KUHINJA	4.6 m ²
04.KUPATILO	4.5 m ²
05.SPAVAĆA SOBA	10.9 m ²
06.TERASA	3.9 m ²

Prizemlje



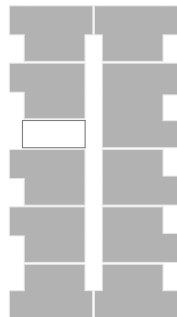
I sprat



II sprat

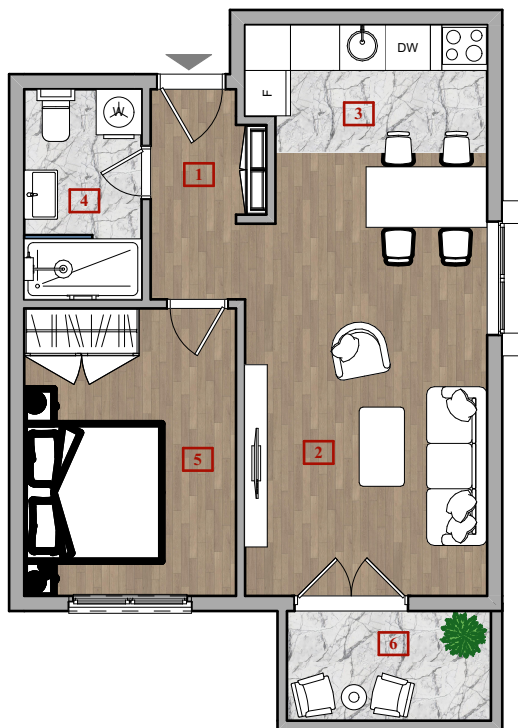


Tavan



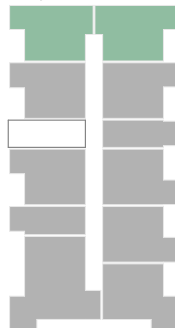
Stambena jedinica (PR.J1, PR.J2, 1.J1, 1.J2, 2.J1, 2.J2)

Jednosoban stan _____ 46.1 m²

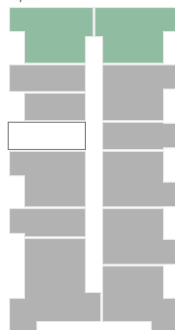


01.HODNIK	3.7 m ²
02.DNEVNI BORAVAK I TRPEZARIJA	18.5 m ²
03.KUHINJA	5.1 m ²
04.KUPATILO	4.3 m ²
05.SPAVAĆA SOBA	10.6 m ²
06.TERASA	3.9 m ²

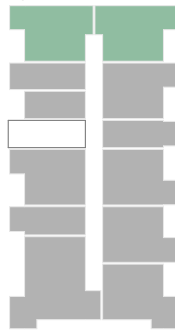
Prizemlje



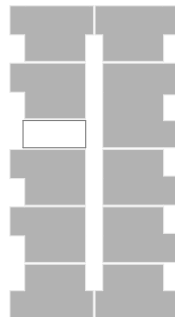
I sprat



II sprat

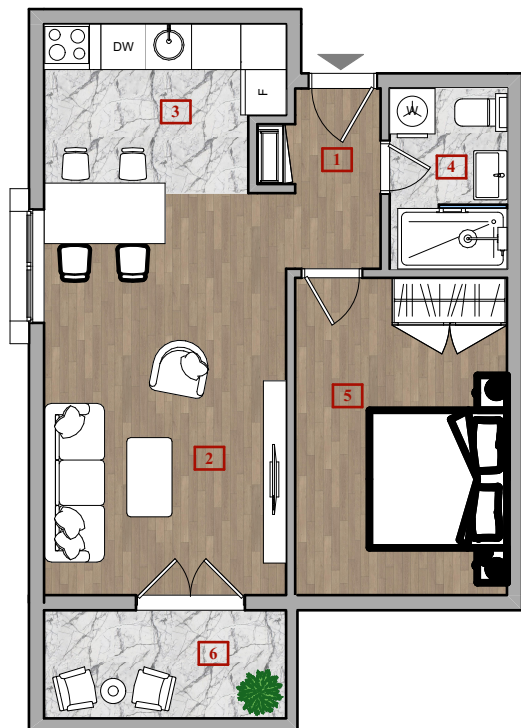


Tavan



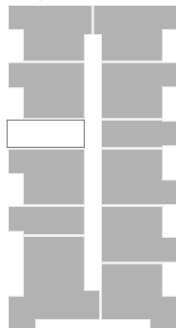
Stambena jedinica (T.J1, T.J2, T.J8, T.J9)

Jednosoban stan _____ 46.9 m²

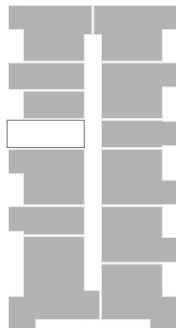


01. HODNIK	3.2 m ²
02. DNEVNI BORAVAK I TRPEZARIJA	18.6 m ²
03. KUHINJA	5.1 m ²
04. KUPATILO	3.7 m ²
05. SPAVAĆA SOBA	11.7 m ²
06. TERASA	4.6 m ²

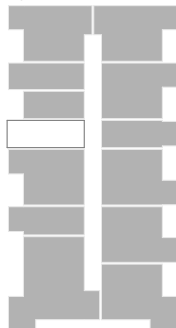
Prizemlje



I sprat



II sprat

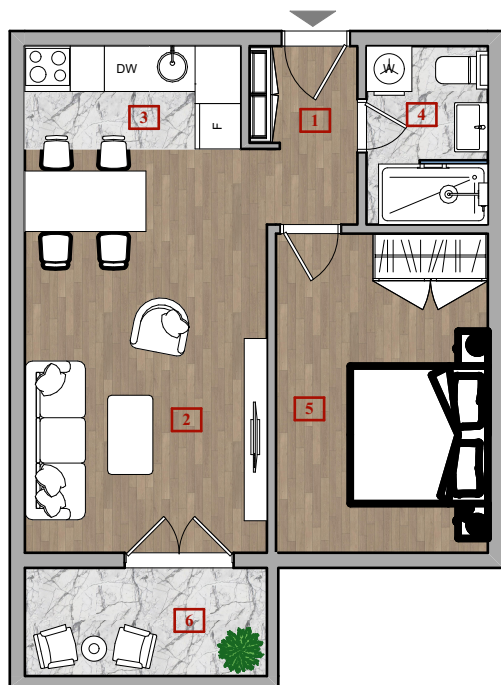


Tavan



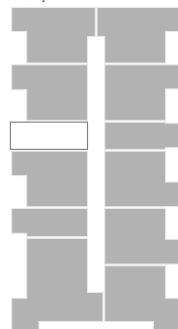
Stambena jedinica (T.J3, T.J4, T.J6, T.J7)

Jednosoban stan _____ 44.3 m²

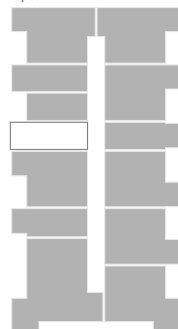


01.HODNIK	3.1 m ²
02.DNEVNI BORAVAK I TRPEZARIJA	17.1 m ²
03.KUHINJA	3.9 m ²
04.KUPATILO	3.8 m ²
05.SPAVAĆA SOBA	11.8 m ²
06.TERASA	4.6 m ²

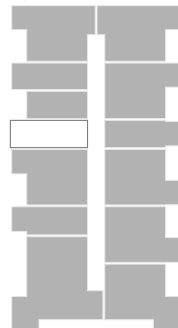
Prizemlje



I sprat



II sprat

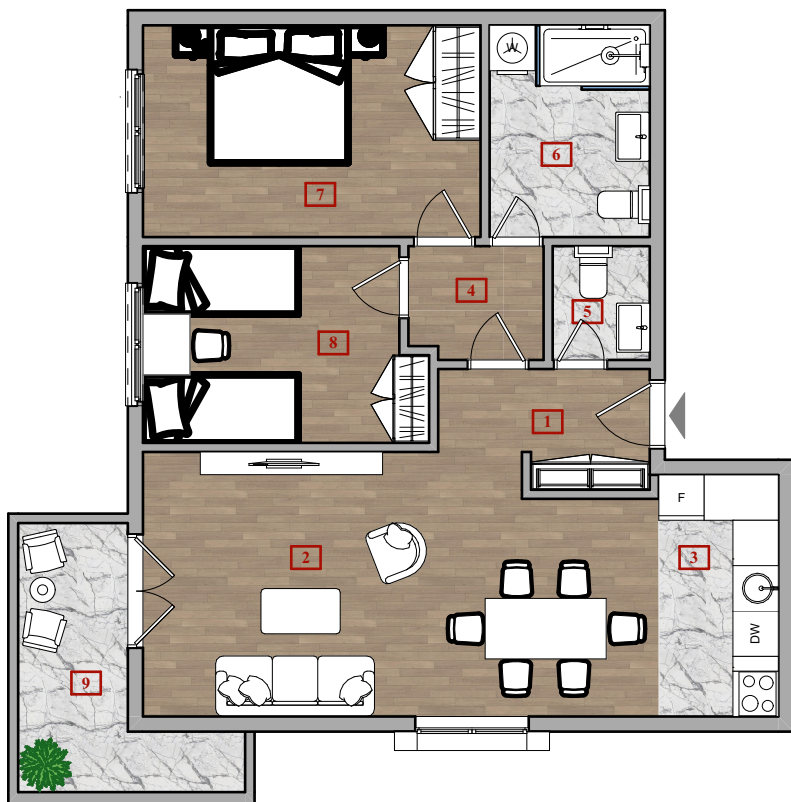


Tavan



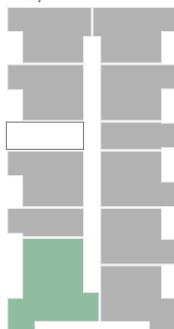
Stambena jedinica (PR.D1, 1.D1, 2.D1)

Dvosoban stan _____ 70.1 m²

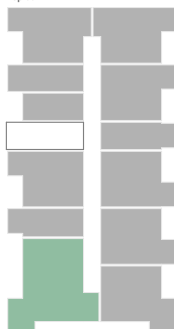


01. HODNIK	3.7 m ²
02. DNEVNI BORAVAK I TRPEZARIJA	22.8 m ²
03. KUHINJA	5 m ²
04. DEGAŽMAN	2.7 m ²
05. WC	2 m ²
06. KUPATILO	5.9 m ²
07. SPAVAĆA SOBA	12.5 m ²
08. SPAVAĆA SOBA	9.3 m ²
09. TERASA	6.4 m ²

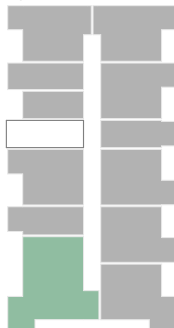
Prizemlje



I sprat



II sprat

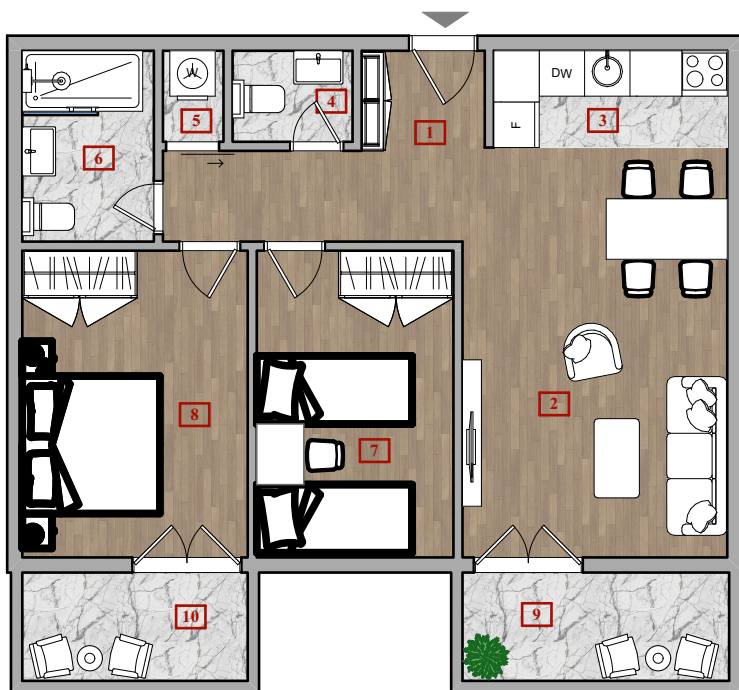


Tavan



Stambena jedinica (T.D1)

Dvosoban stan _____ 69.0 m²



01. HODNIK	7.1 m ²
02. DNEVNI BORAVAK I TRPEZARIJA	18.8 m ²
03. KUHINJA	3.9 m ²
04. WC	1.9 m ²
05. VESERAJ	1.0 m ²
06. KUPATILO	4.4 m ²
07. SPAVAČA SOBA	10.5 m ²
08. SPAVAČA SOBA	12.1 m ²
09. TERASA	5.0 m ²
10. TERASA	4.3 m ²

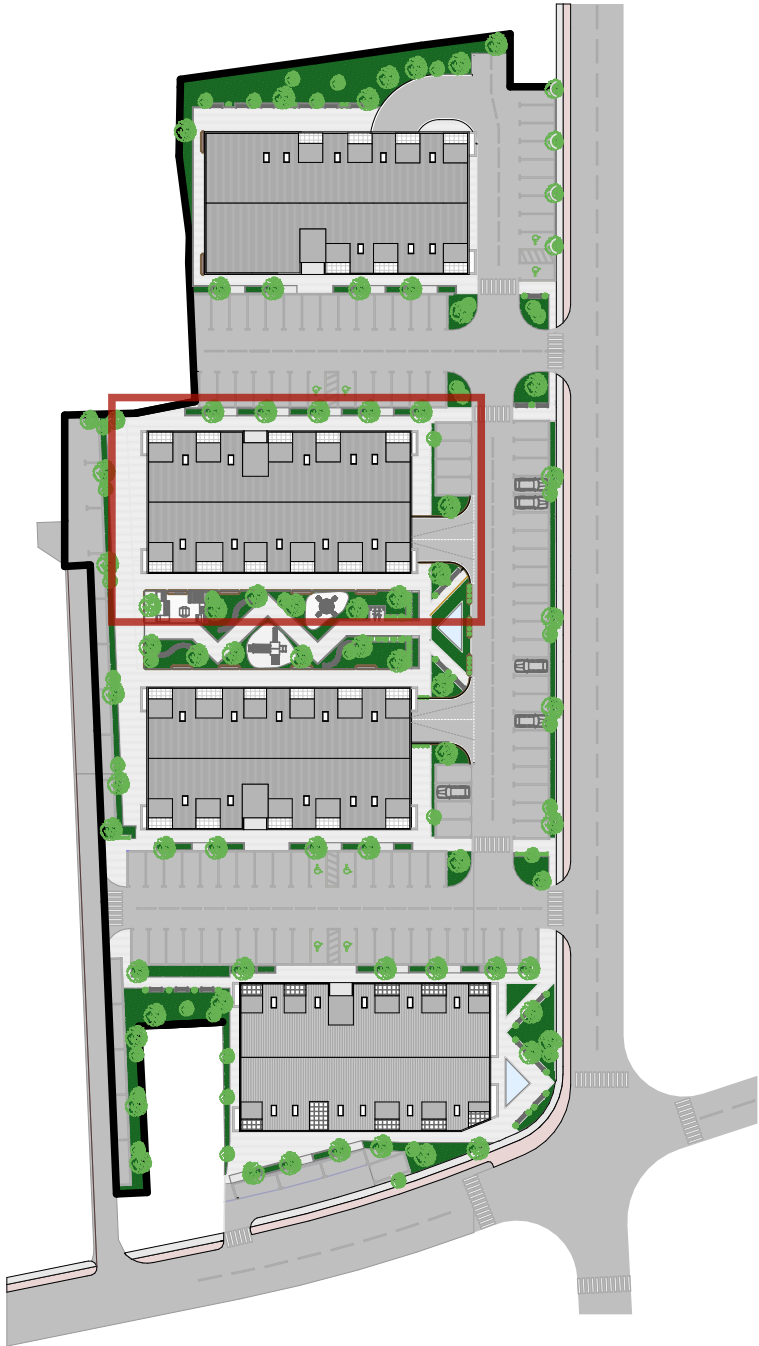
Prizemlje

I sprat

II sprat

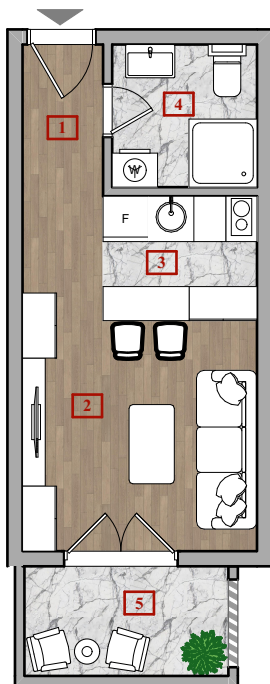
Tavan

ZGRADA 3



Stambena jedinica (Pr.G2, 1.G4, 2.G4)

Garsonjera _____ 24.3 m²

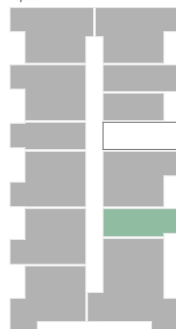


01.HODNIK	2.1 m ²
02.DNEVNI BORAVAK I TRPEZARIJA	12.7 m ²
03.KUHINJA	2.0 m ²
04.KUPATILO	3.6 m ²
05.TERASA	3.9 m ²

Prizemlje



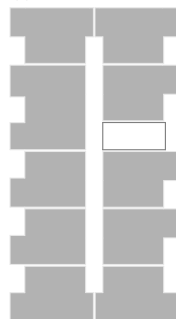
I sprat



II sprat

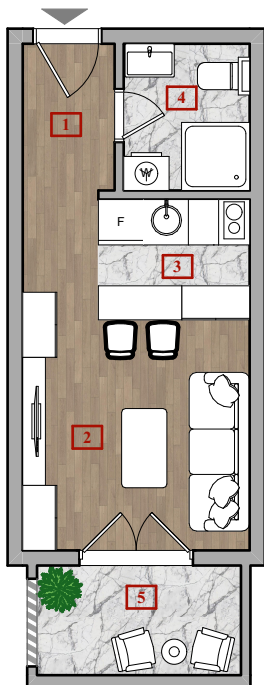


Tavan



Stambena jedinica (PR.G1, 1.G3, 2.G3)

Garsonjera _____ 23.5 m²



01.HODNIK	2.5 m ²
02.DNEVNI BORAVAK I TRPEZARIJA	11.5 m ²
03.KUHINJA	2.4 m ²
04.KUPATILO	3.2 m ²
05.TERASA	3.9 m ²

Prizemlje



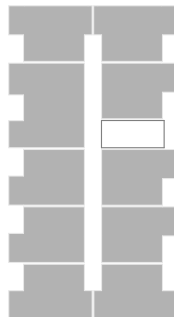
I sprat



II sprat

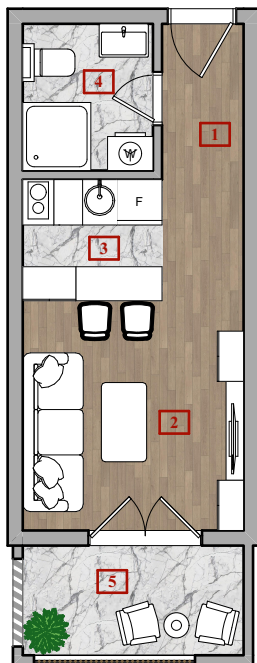


Tavan



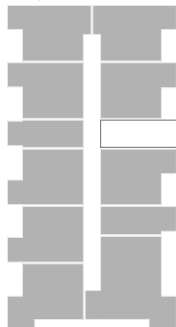
Stambena jedinica (1.G1, 2.G1)

Garsonjera _____ 23.3 m²



01.HODNIK	2.2 m ²
02.DNEVNI BORAVAK I TRPEZARIJA	11.5 m ²
03.KUHINJA	2.1 m ²
04.KUPATILO	3.3 m ²
05.TERASA	4.2 m ²

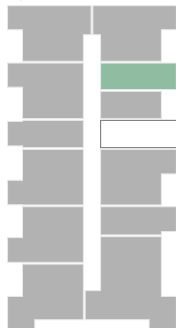
Prizemlje



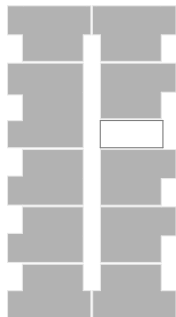
I sprat



II sprat

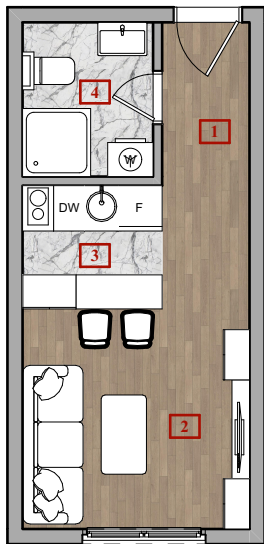


Tavan



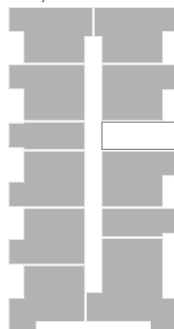
Stambena jedinica (1.G2, 2.G2)

Garsonjera _____ 19.6 m²



01.HODNIK	2.5 m ²
02.DNEVNI BORAVAK I TRPEZARIJA	11.9 m ²
03.KUHNJA	1.7 m ²
04.KUPATILO	3.5 m ²

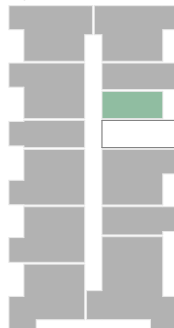
Prizemlje



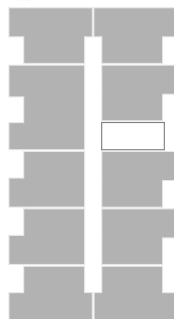
I sprat



II sprat

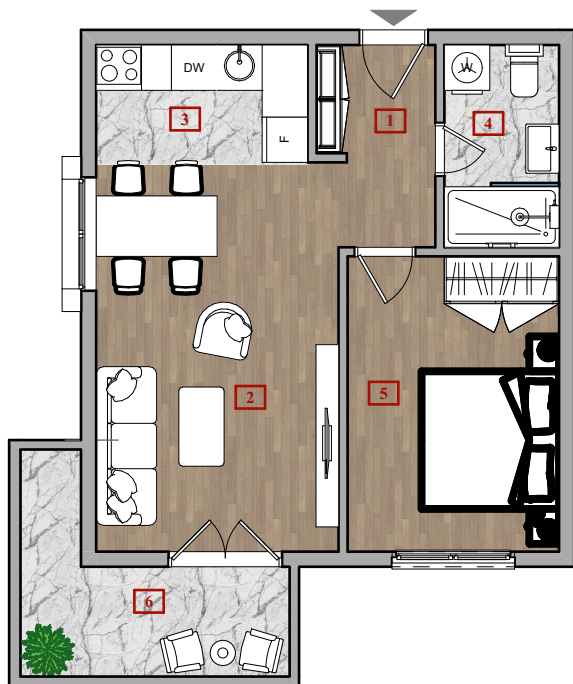


Tavan



Stambena jedinica (PR. J8, 1.J7, 2.J7)

Jednosoban stan _____ 46.0 m²

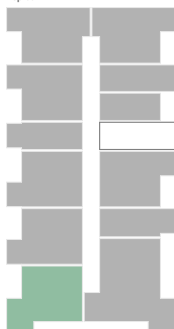


01.HODNIK	3.8 m ²
02.DNEVNI BORAVAK I TRPEZARIJA	16.5 m ²
03.KUHINJA	4.3 m ²
04.KUPATILO	4.1 m ²
05.SPAVAĆA SOBA	10.9 m ²
06.TERASA	6.4 m ²

Prizemlje



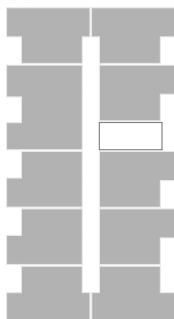
I sprat



II sprat

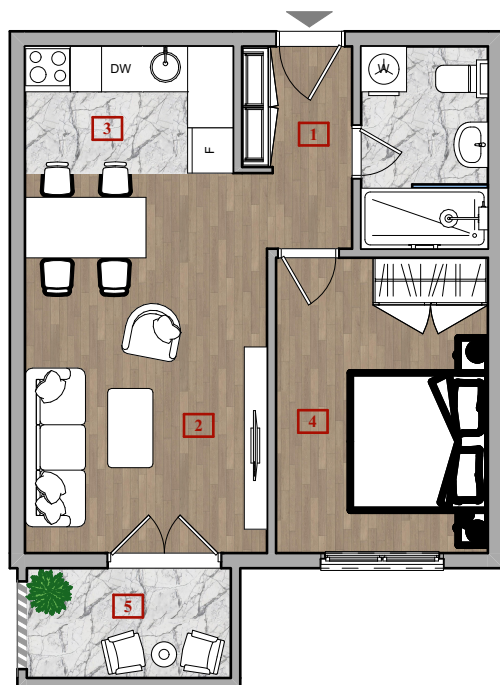


Tavan



Stambena jedinica (PR.J3, PR.J4, PR.J5, PR.J6, PR.J7, 1.J3, 1.J4, 1.J5, 1.J6, 2.J3, 2.J4, 2.J5, 2.J6)

Jednosoban stan _____ 43.5 m²



01.HODNIK	3.5 m ²
02.DNEVNI BORAVAK I TRPEZARIJA	16.1 m ²
03.KUHNJA	4.6 m ²
04.KUPATILO	4.5 m ²
05.SPAVAČA SOBA	10.9 m ²
06.TERASA	3.9 m ²

Prizemlje



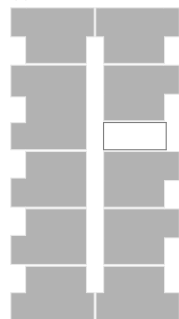
I sprat



II sprat

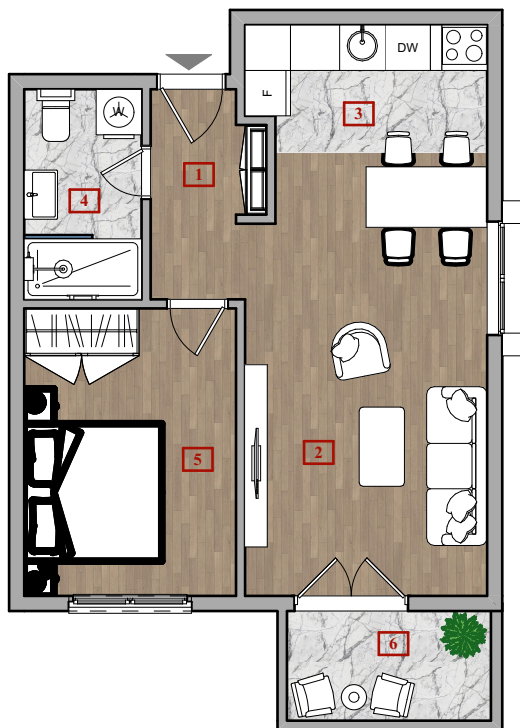


Tavan



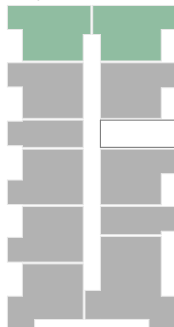
Stambena jedinica (PR.J1, PR.J2, 1.J1, 1.J2, 2.J1, 2.J2)

Jednosoban stan _____ 46.1 m²

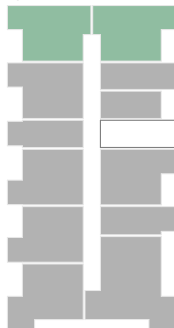


01.HODNIK	3.7 m ²
02.DNEVNI BORAVAK I TRPEZARIJA	18.5 m ²
03.KUHINJA	5.1 m ²
04.KUPATILO	4.3 m ²
05.SPAVAĆA SOBA	10.6 m ²
06.TERASA	3.9 m ²

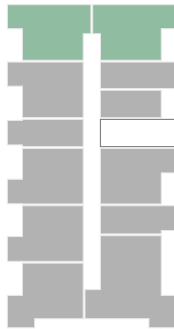
Prizemlje



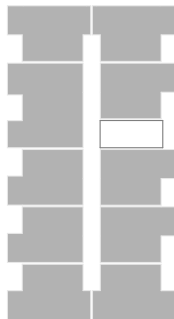
I sprat



II sprat

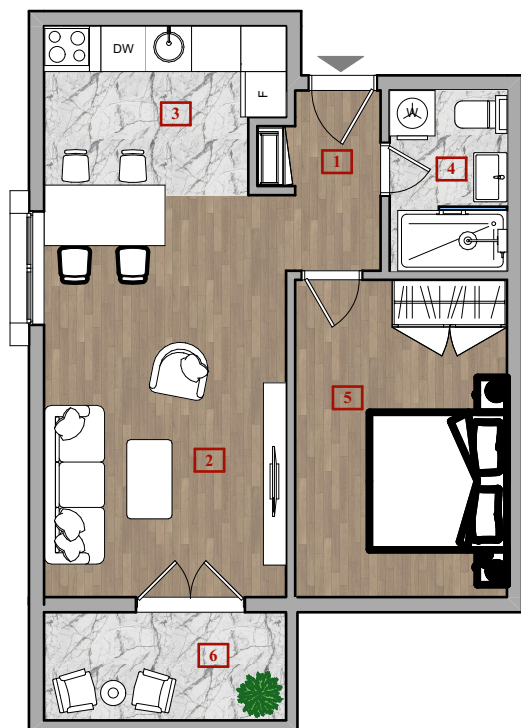


Tavan



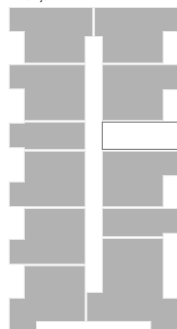
Stambena jedinica (T.J1, T.J2, T.J8, T.J9)

Jednosoban stan _____ 46.9 m²

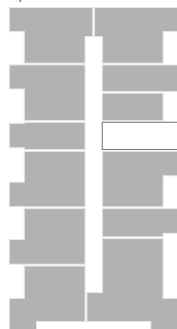


01. HODNIK	3.2 m ²
02. DNEVNI BORAVAK I TRPEZARIJA	18.6 m ²
03. KUHINJA	5.1 m ²
04. KUPATILO	3.7 m ²
05. SPAVAĆA SOBA	11.7 m ²
06. TERASA	4.6 m ²

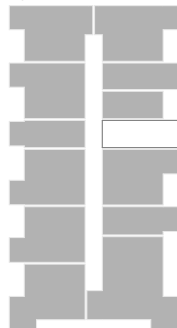
Prizemlje



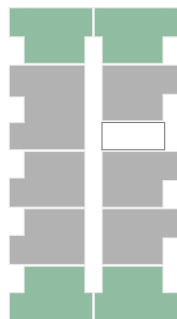
I sprat



II sprat

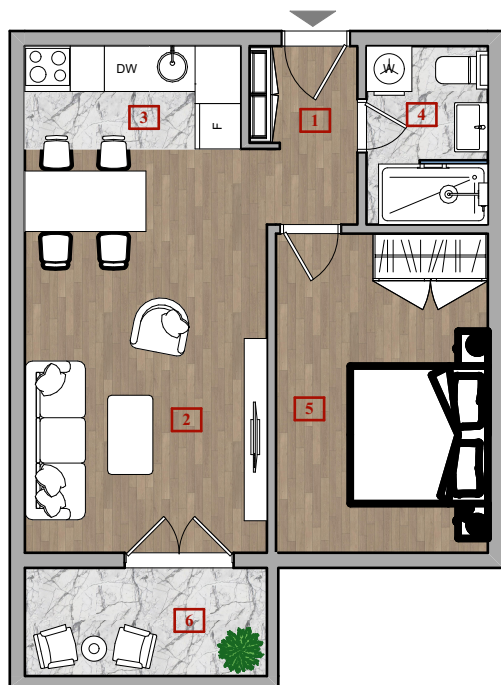


Tavan

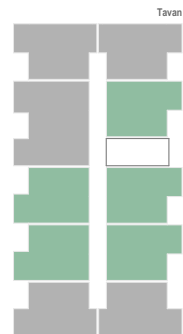
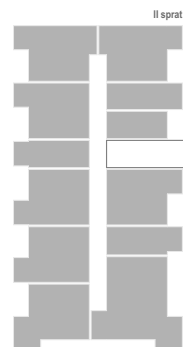
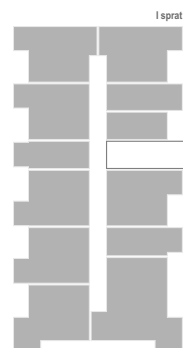
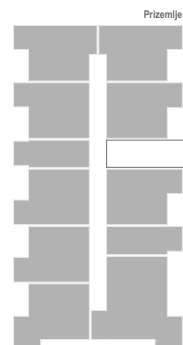


Stambena jedinica (T.J3, T.J4, T.J6, T.J7)

Jednosoban stan _____ 44.3 m²

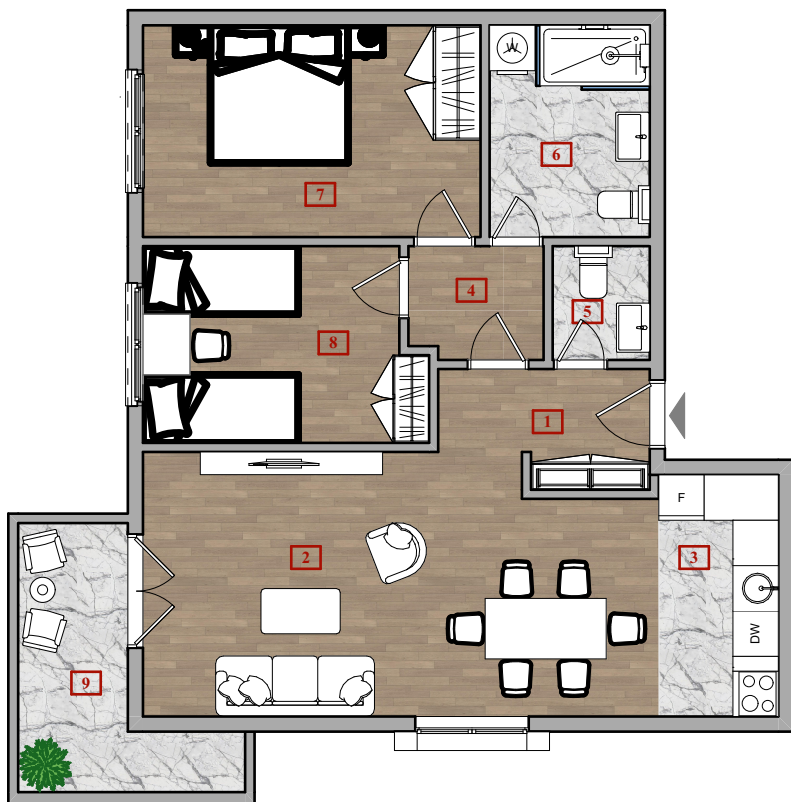


01.HODNIK	3.1 m ²
02.DNEVNI BORAVAK I TRPEZARIJA	17.1 m ²
03.KUHINJA	3.9 m ²
04.KUPATILO	3.8 m ²
05.SPAVAĆA SOBA	11.8 m ²
06.TERASA	4.6 m ²



Stambena jedinica (PR.D1, 1.D1, 2.D1)

Dvosoban stan _____ 70.1 m²



01. HODNIK	3.7 m ²
02. DNEVNI BORAVAK I TRPEZARIJA	22.8 m ²
03. KUHINJA	5 m ²
04. DEGAŽMAN	2.7 m ²
05. WC	2 m ²
06. KUPATILO	5.9 m ²
07. SPAVAĆA SOBA	12.5 m ²
08. SPAVAĆA SOBA	9.3 m ²
09. TERASA	6.4 m ²

Prizemlje

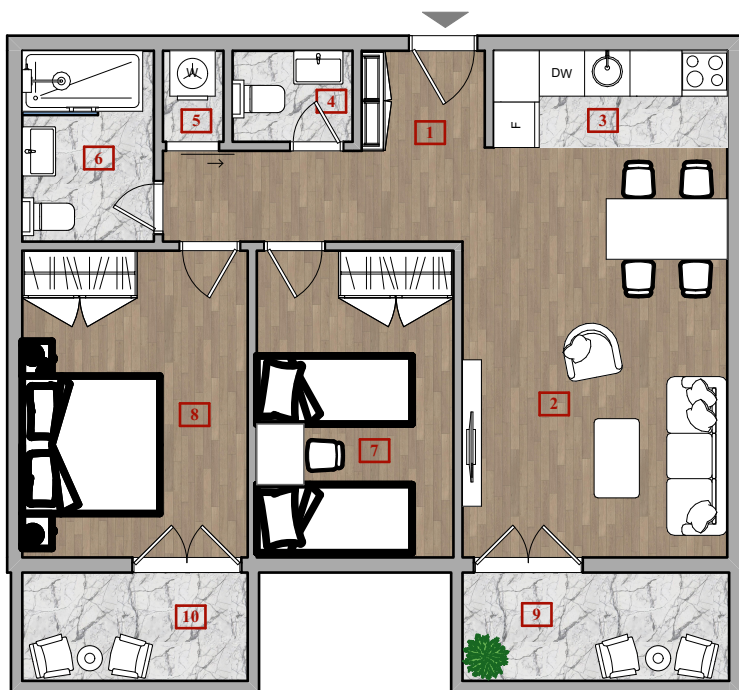
I sprat

II sprat

Tavan

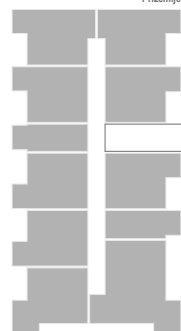
Stambena jedinica (T.D1)

Dvosoban stan _____ 69.0 m²

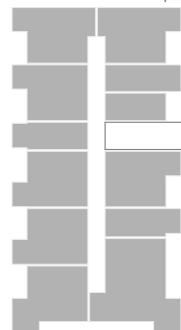


01. HODNIK	7.1 m ²
02. DNEVNI BORAVAK I TRPEZARIJA	18.8 m ²
03. KUHINJA	3.9 m ²
04. WC	1.9 m ²
05. VESERAJ	1.0 m ²
06. KUPATILO	4.4 m ²
07. SPAVAČA SOBA	10.5 m ²
08. SPAVAČA SOBA	12.1 m ²
09. TERASA	5.0 m ²
10. TERASA	4.3 m ²

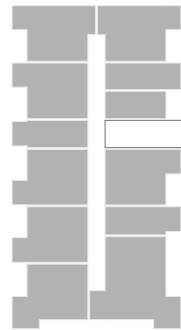
Prizemlje



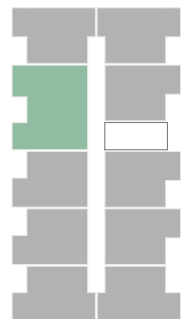
I sprat



II sprat



Tavan

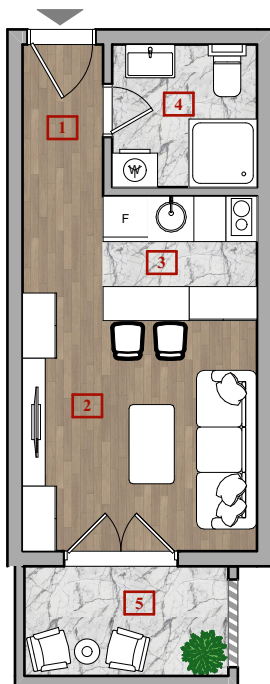


ZGRADA 4



Stambena jedinica (Pr.G2, 1.G4, 2.G4)

Garsonjera _____ 24.3 m²



01.HODNIK	2.1 m ²
02.DNEVNI BORAVAK I TRPEZARIJA	12.7 m ²
03.KUHINJA	2.0 m ²
04.KUPATILO	3.6 m ²
05.TERASA	3.9 m ²

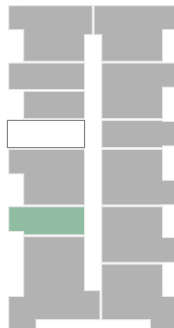
Prizemlje



I sprat



II sprat

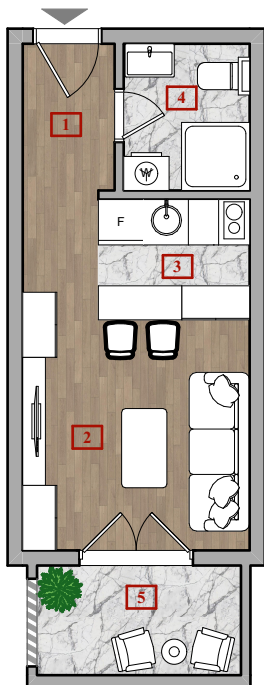


Tavan



Stambena jedinica (PR.G1, 1.G3, 2.G3)

Garsonjera _____ 23.5 m²

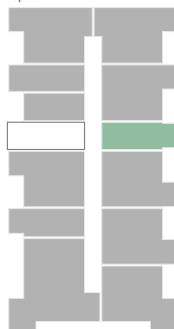


01.HODNIK	2.5 m ²
02.DNEVNI BORAVAK I TRPEZARIJA	11.5 m ²
03.KUHINJA	2.4 m ²
04.KUPATILO	3.2 m ²
05.TERASA	3.9 m ²

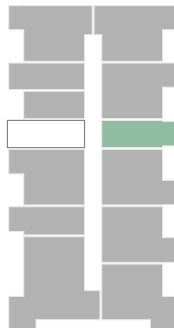
Prizemlje



I sprat



II sprat

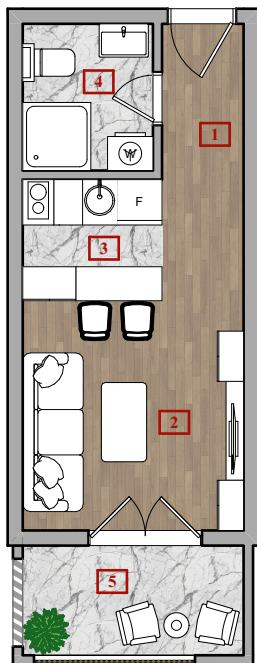


Tavan



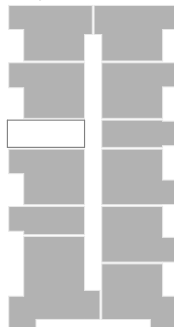
Stambena jedinica (1.G1, 2.G1)

Garsonjera _____ 23.3 m²



01.HODNIK	2.2 m ²
02.DNEVNI BORAVAK I TRPEZARIJA	11.5 m ²
03.KUHINJA	2.1 m ²
04.KUPATILO	3.3 m ²
05.TERASA	4.2 m ²

Prizemlje



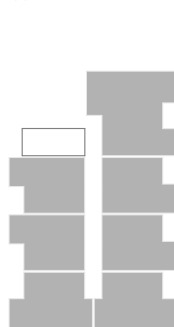
I sprat



II sprat

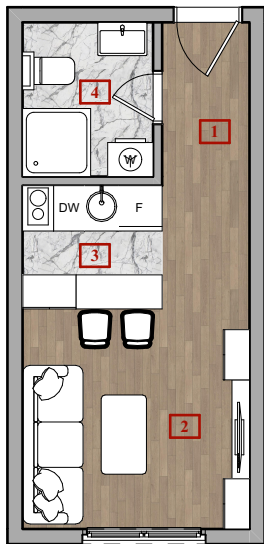


Tavan



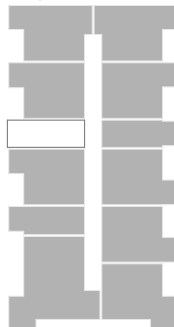
Stambena jedinica (1.G2, 2.G2)

Garsonjera _____ 19.6 m²

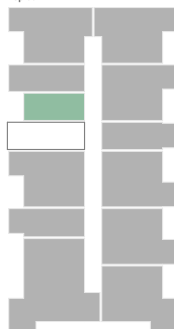


01.HODNIK	2.5 m ²
02.DNEVNI BORAVAK I TRPEZARIJA	11.9 m ²
03.KUHINJA	1.7 m ²
04.KUPATILO	3.5 m ²

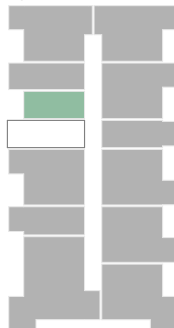
Prizemlje



I sprat



II sprat

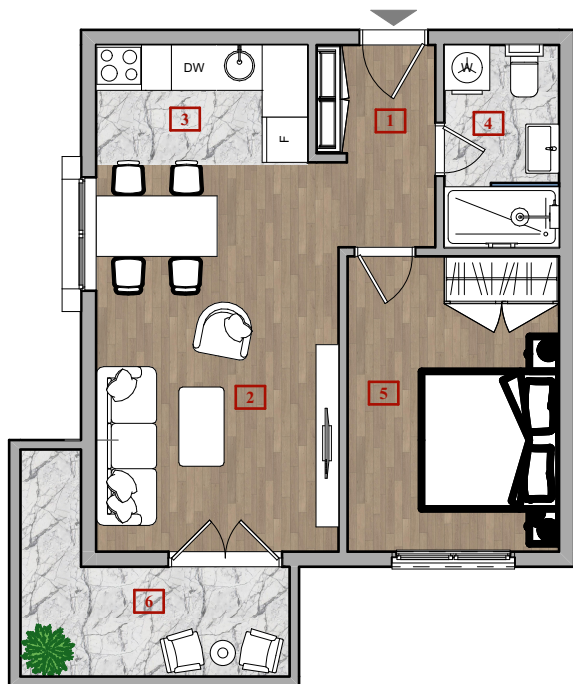


Tavan



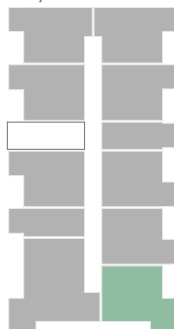
Stambena jedinica (PR. J8, 1.J7, 2.J7)

Jednosoban stan _____ 46.0 m²

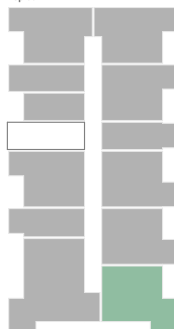


01.HODNIK	3.8 m ²
02.DNEVNI BORAVAK I TRPEZARIJA	16.5 m ²
03.KUHINJA	4.3 m ²
04.KUPATILO	4.1 m ²
05.SPAVAĆA SOBA	10.9 m ²
06.TERASA	6.4 m ²

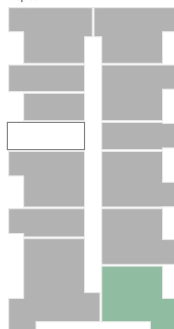
Prizemlje



I sprat



II sprat

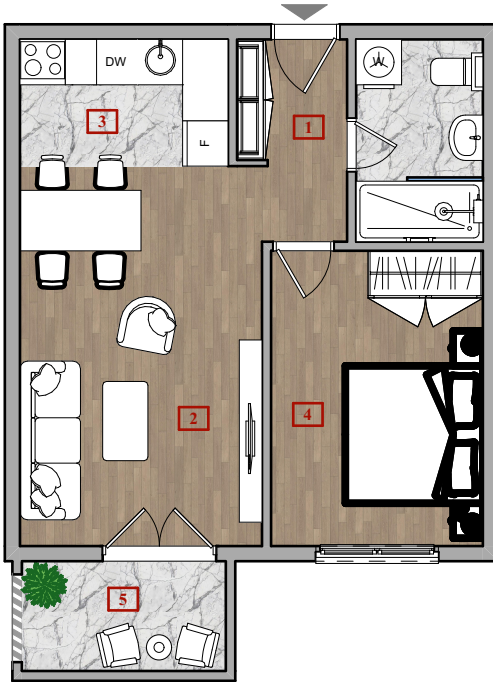


Tavan



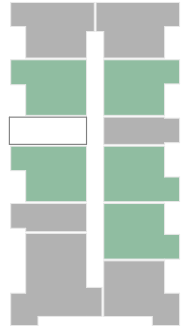
Stambena jedinica (PR.J3, PR.J4, PR.J5, PR.J6, PR.J7, 1.J3, 1.J4, 1.J5, 1.J6, 2.J3, 2.J4, 2.J5, 2.J6)

Jednosoban stan _____ 43.5 m²

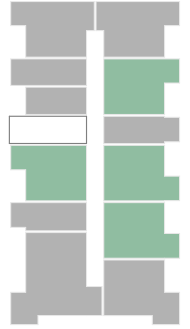


01.HODNIK	3.5 m ²
02.DNEVNI BORAVAK I TRPEZARIJA	16.1 m ²
03.KUHNJA	4.6 m ²
04.KUPATILO	4.5 m ²
05.SPAVAČA SOBA	10.9 m ²
06.TERASA	3.9 m ²

Prizemlje



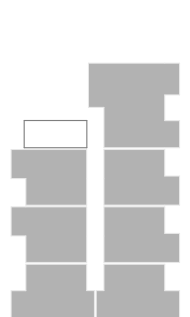
I sprat



II sprat

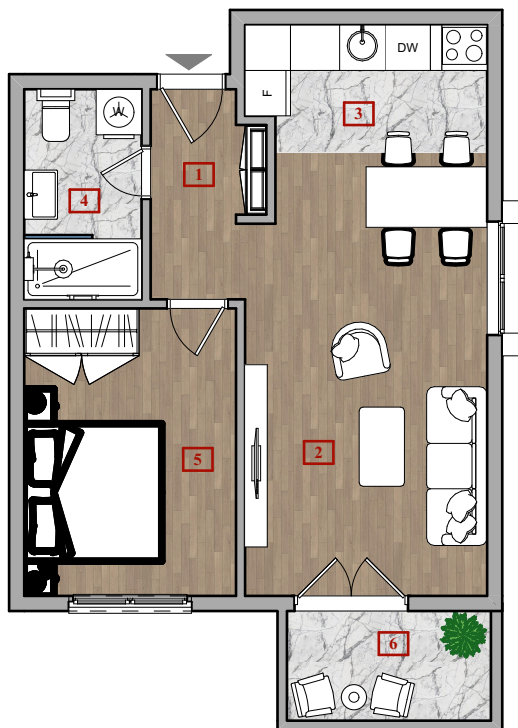


Tavan



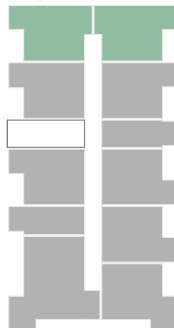
Stambena jedinica (PR.J1, PR.J2, 1.J1, 1.J2, 2.J1, 2.J2)

Jednosoban stan _____ 46.1 m²

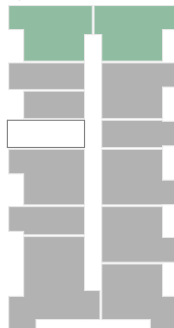


01. HODNIK	3.7 m ²
02. DNEVNI BORAVAK I TRPEZARIJA	18.5 m ²
03. KUHINJA	5.1 m ²
04. KUPATILO	4.3 m ²
05. SPAVAĆA SOBA	10.6 m ²
06. TERASA	3.9 m ²

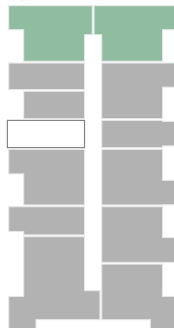
Prizemlje



I sprat



II sprat

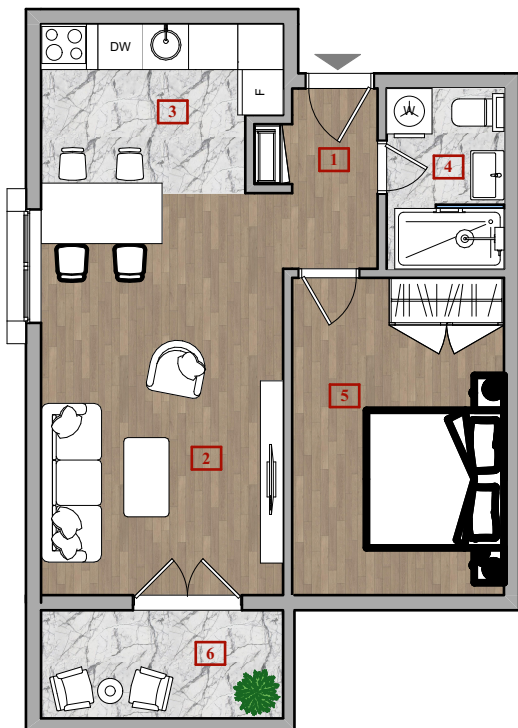


Tavan



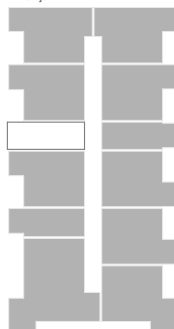
Stambena jedinica (T.J5, T.J6)

Jednosoban stan _____ 46.9 m²

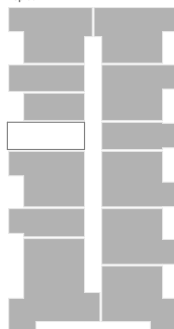


01. HODNIK	3.2 m ²
02. DNEVNI BORAVAK I TRPEZARIJA	18.6 m ²
03. KUHINJA	5.1 m ²
04. KUPATILO	3.7 m ²
05. SPAVAĆA SOBA	11.7 m ²
06. TERASA	4.6 m ²

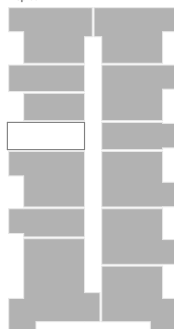
Prizemlje



I sprat



II sprat

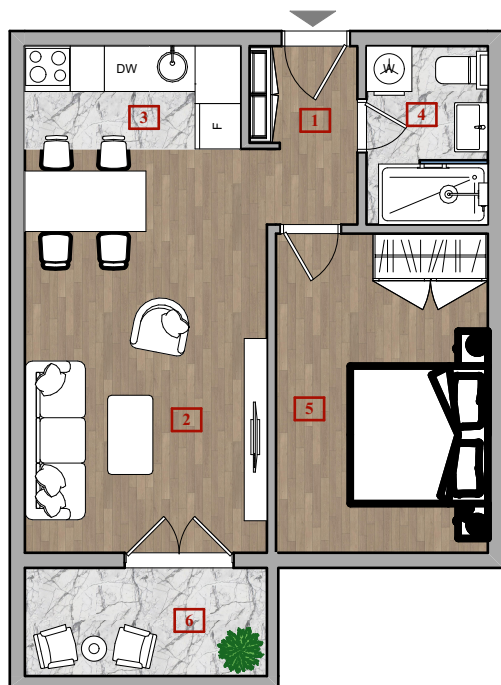


Tavan



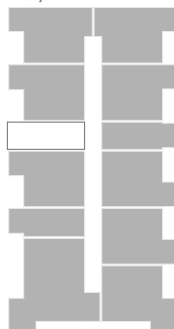
Stambena jedinica (T.J1, T.J2, T.J3, T.J4)

Jednosoban stan _____ 44.3 m²

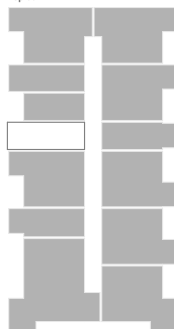


01.HODNIK	3.1 m ²
02.DNEVNI BORAVAK I TRPEZARIJA	17.1 m ²
03.KUHINJA	3.9 m ²
04.KUPATILO	3.8 m ²
05.SPAVAĆA SOBA	11.8 m ²
06.TERASA	4.6 m ²

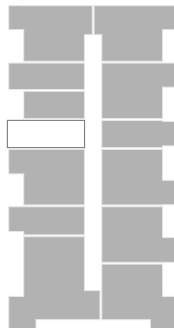
Prizemlje



I sprat



II sprat

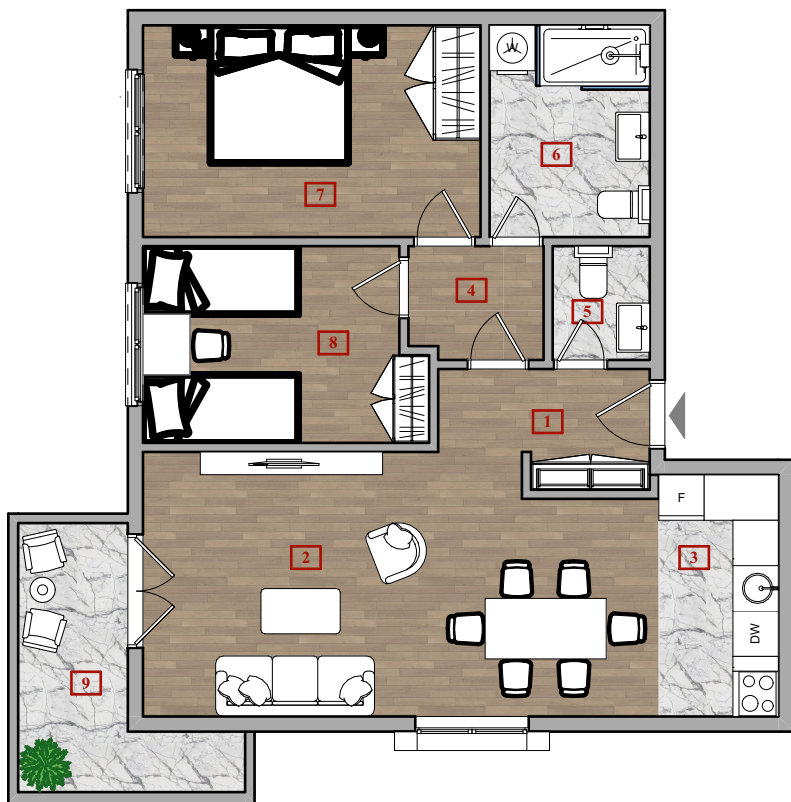


Tavan



Stambena jedinica (PR.D1, 1.D1, 2.D1)

Dvosoban stan _____ 70.1 m²



01. HODNIK	3.7 m ²
02. DNEVNI BORAVAK I TRPEZARIJA	22.8 m ²
03. KUHINJA	5 m ²
04. DEGAŽMAN	2.7 m ²
05. WC	2 m ²
06. KUPATILO	5.9 m ²
07. SPAVAĆA SOBA	12.5 m ²
08. SPAVAĆA SOBA	9.3 m ²
09. TERASA	6.4 m ²

Prizemlje

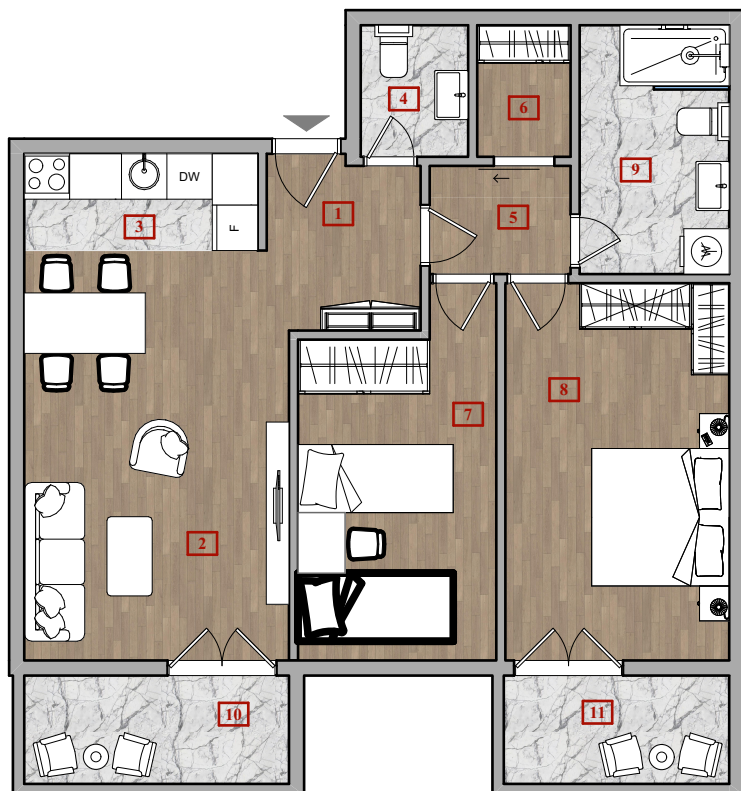
I sprat

II sprat

Tavan

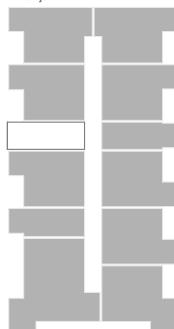
Stambena jedinica (T.D1)

Dvosoban stan _____ 76.8 m²

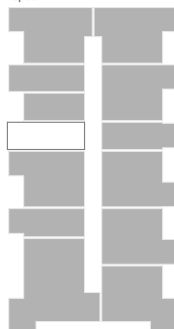


01.HODNIK	4.4 m ²
02.DNEVNI BORAVAK I TRPEZARIJA	18.8 m ²
03.KUHINJA	3.9 m ²
04.WC	2.5 m ²
05.DEGAŽMAN	2.7 m ²
06.OSTAVA	2.1 m ²
07.SPAVAČA SOBA	11.8 m ²
08.SPAVAČA SOBA	14.8 m ²
09.KUPATILO	6.5 m ²
10.TERASA	5.0 m ²
11.TERASA	4.3 m ²

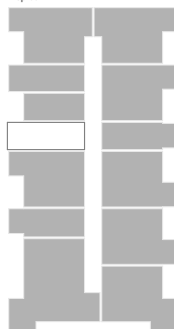
Prizemlje



I sprat



II sprat



Tavan

